



kubicon

PROACTIVE END TO END WI-FI MONITORING
AND SLA REPORTING TOOL



Challenge

Wi-Fi networks have transitioned from something nice to have to critical service for many organizations across different verticals. As such they require constant quality control, visibility over existing or possible challenges as well operation effort to perform maintenance and prompt issue resolution.

Although traditional, event-driven solutions do provide a good level of visibility over radio aspect, they simply don't paint the whole picture .

Organizations are still lacking the information about real end user experience – for instance: WiFi signal perception on the end client, is it possible to authenticate on a captive portal, how much time does it take to load a Facebook page, upload a file to Dropbox or simply get the IP address from DHCP server., etc

Another important issue is a lack of proactive monitoring. The existing solutions offer on-demand troubleshooting and monitoring where these process usually starts after the issue has been reported by the end user, and that's often too little too late.





About Kubicon

Kubicon is a proactive end-to-end Wi-Fi experience monitoring and SLA reporting tool. Our vendor agnostic solution is built from two components – cloud platform and hardware Wi-Fi sensors.

Kubicon Dashboard provides highly secured, single pane of glass, end-to-end client experience monitoring. It provides enhanced visibility into complete, real-time and historic user performance, enabling proactive and efficient troubleshooting before end clients are affected!

Solution configuration, management and reporting is done from the cloud dashboard.

Kubicon sensor is a 802.11ac wireless client which provides insight from end-user perspective by essentially mimicking human behavior.

Sensor provisioning is plug and play - straightforward process leveraging PoE and should be performed on locations where Wi-Fi quality experience needs to be measured and monitored.

Cloud is built as a multi-tenant console from where one administrator can have as many sensors as required to cover one or more desired Wi-Fi environments



How do we do it

Solution monitors number of important factors such as:

Wireless performance:

signal strength, bitrate, packet retries, MCS rate, Channel width etc.

Network performance:

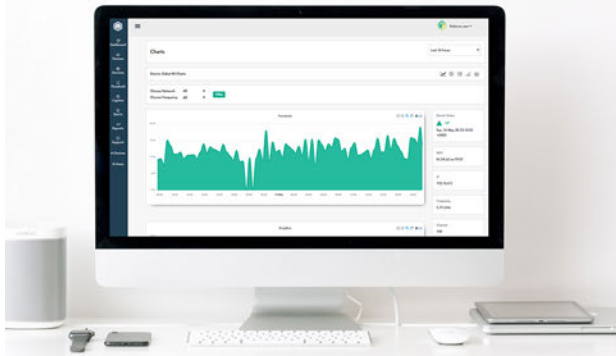
DHCP performance, DNS query time, Bandwidth , etc

Service performance:

Time to load desired portals (Facebook, YouTube, Twitter, custom external and/or internal portals), Captive Portal Performance, video test and many more, all from perspective of the Wi-Fi end user.

Additionally, it calculates overall Wi-Fi client experience score as well as SLA breaches and immediately notifies the organization about the changes or possible impact.

All results are available in form of real-time graphs, tables and dashboards on cloud console or in form of on demand reports which can be exported in multiple easy to read/use formats.



Smart notification

Kubicon main principals are simplicity and visibility.

With a goal of increasing operational efficiency of customers IT teams and help maintaining desired level of Wi-Fi service usability, we are constantly inventing and developing new intelligent alerts to decrease time spent on troubleshooting and proactively alert you about possible network performance problems and impact that your Wi-Fi users could start experiencing.

Alerts such as:

- Sensor down
- SSID down/missing beacons
- Authentication failed (Captive portal, 802.1x, PSK)
- DNS performance and reachability / doesn't resolve queries
- DHCP performance and reachability / failed to allocate IP address
- Internet access health
- Captive portal performance and reachability
- Services (customizable websites / applications) performance are under desired thresholds
- Frequency changes
- Roaming events
- SLA breaches





Pricing structure / Business mode

- Subscription Based Service- All Features Unlocked, No Hidden Costs!
- No CapEx, No Initial Fees – The Sensor Comes “Free of Charge”
- New Features Added On Regular Basis
- Monthly license per sensor per month
- Unique pricing model for Managed Service Providers





kubicon

| Feel free to contact us



info@kubicon.io



<https://kubicon.io/>



[https://www.linkedin.com/
company/kubicon](https://www.linkedin.com/company/kubicon)



https://twitter.com/Kubicon_io

